

SE-B2K



- Make/receive both VoIP calls and PSTN regular calls simultaneously
- PC-to-PC, PC-to-Phone, Phone-to-Phone operation
- SKYPE ready, share your standard phone with Skype
- Start to saving your phone bill by using it

CONTENTS

CHAPTER 1 Welcome to SE-B2K

1.1 Summary	3
1.2 Features	3
1.3 System Requirements	3
1.4 Package Contents	3

CHAPTER 2 Use of SE-B2K

2.1 Run Skype	4
2.2 Connect SE-B2K to PC	5
2.3 Run SkypeMate	5
2.4 Channels Switch	6
2.5 Make calls through USB	6
2.5.1 Call another Skype user (PC to PC)	6
2.5.2 Call to regular phone (PC to Phone)	6
2.6 Make calls through PSTN (Phone to Phone)	7
2.7 Answer a call	7
2.8 Adjust options (volume and default channel)	7
2.9 FAQ	7

The information in this document is subject to change without notice and does not represent a commitment on the part of the developer. This document contains materials protected by copyright. All rights are reserved. No part of this manual may be reproduced or transmitted in any form, by any means or for purpose without express written consent.

CHAPTER 1

Welcome to SE-B2K

1.1 Summary

SE-B2K is a most effective and easy mode of communication. User can enjoy an Internet phone(VoIP) or a regular phone by pressing "*" key to switch the channel. It embraces the great convenience and big savings of using VoIP calls.

1.2 Features

1. Receive both VoIP calls and PSTN regular calls simultaneously
2. PC-to-PC, PC-to-phone, Phone to Phone operation
3. Phone ring signals are generated with Skype incoming calls
4. Driver built-in, plug and play
5. USB1.1 and 2.0 compatible, no need sound card
6. No external power required
7. Echo cancellation, noise reduction
8. Full duplex communication

1.3 System Requirements

1. Windows 2000 or XP
2. 400MHz processor or higher
3. 128MB RAM or higher
4. Free USB port

1.4 Package Contents

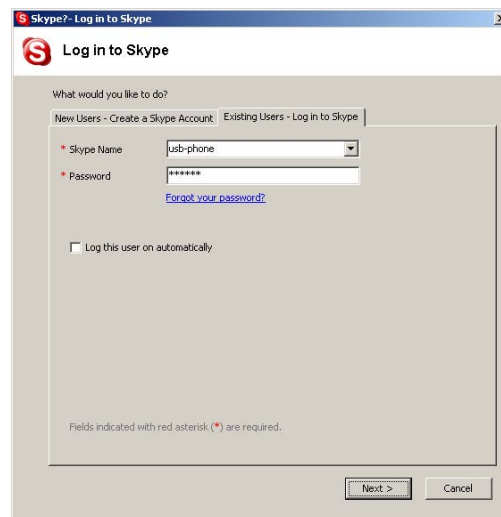
1. SE-B2K x1
2. USB Cable x1
3. User Manual x1
4. Installation CD x1

CHAPTER 2

USE of SE-B2K

2.1 Run Skype

- ▣ Download Skype software and install it (www.skype.com), the version must be 1.0.0.106 or higher.
- ▣ Run Skype and log in with skype account.




You can create a Skype account as shown below:

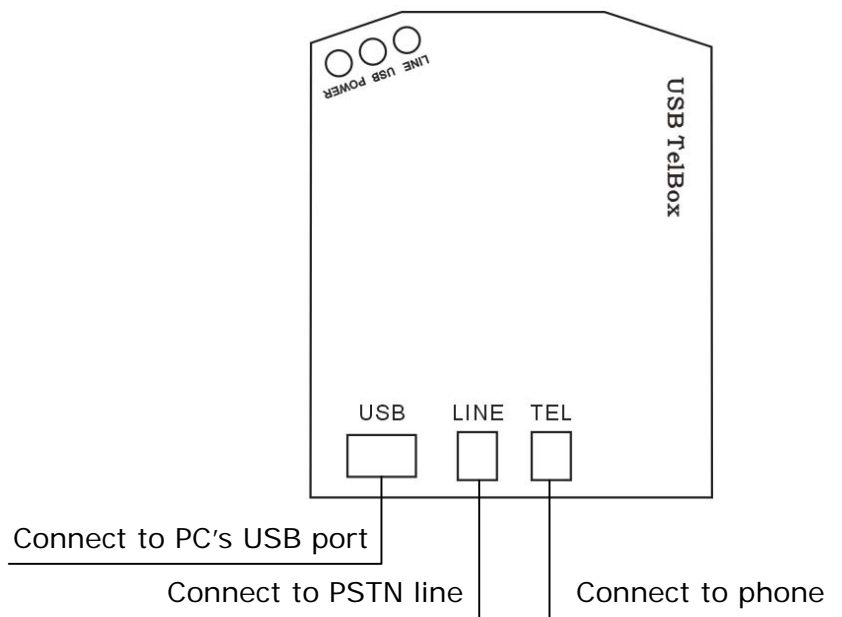


After the software startup, the icon will appear to the system tray as shown below:



That indicates the Skype has successfully connected to Internet. If it hasn't connected to Internet, the icon will be shown as , you have to check whether PC is connected to Internet successfully or not.


2.2 Connect SE-B2K to PC



- ▣ Connect SE-B2K to PC, POWER indicator will be on.
- ▣ Plug PSTN line in "LINE" port.
- ▣ Connect Phone to "TEL" port.

2.3 Run SkypeMate

- ▣ Insert SkypeMate Installation CD or download SkypeMate software, and install it (www.skype-phone.net).
- ▣ Run SkypeMate

Double-click the icon  on the desktop, the Skype program will pop up the window as shown below:



Select the first option "Allow this program to use Skype", click "OK" button.


Note: If you selected the wrong option, you can make another selection.
Please see **2.9. FAQ /problem3** for detail.

After running SkypeMate, the icon will appear to the system tray as shown below:



That indicates the device and Skype are connected successfully.

If the icon shown as , please run Skype first.

If the icon shown as , it means SE-B2K connected incorrectly, please reconnect SE-B2K to PC.

Note: When SkypeMate startup, the default channel is PSTN.

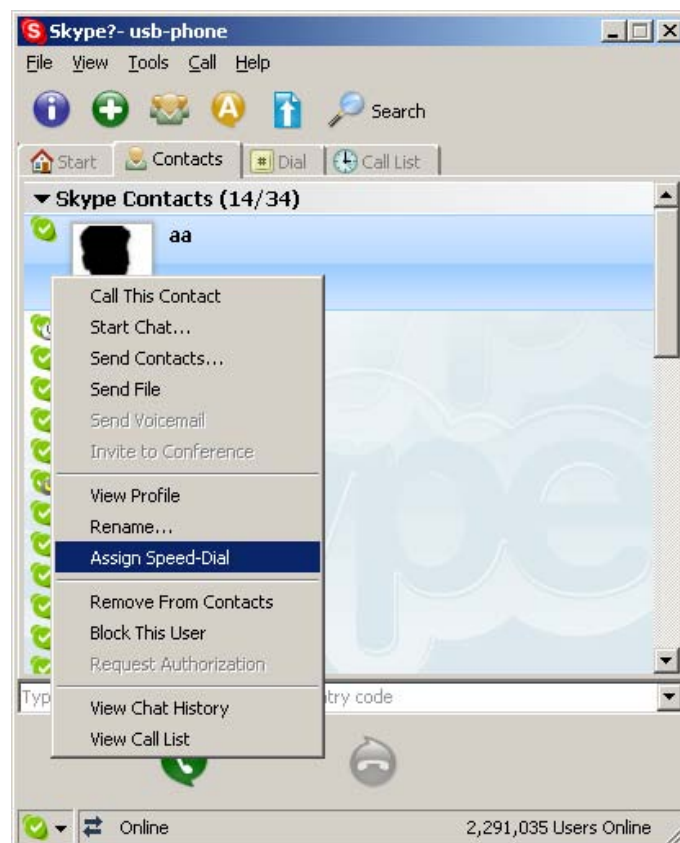
2.4 Channels Switch

You can press "*" to switch PSTN channel to USB channel or switch USB channel to PSTN channel.

2.5 Make calls through USB

2.5.1 Call another Skype user (PC to PC)

- ▣ Add "aa" to Contacts
- ▣ Assign Speed-Dial for it, for example "11"



- Input number and call out:
Press "*" to change to USB channel, the "USB" indicator is on. Press digital "11" on the phone, this number will be shown on Skype window, then press "#" to call out. When you hang up, the SE-B2K switch to PSTN channel automatically.

2.5.2 Call to regular phone (PC to Phone)

Press "00"+"country number"+"phone number"+"#" can start the Skype out.

Example: call to China, beijing, press 00861012345678, then press "#".

0086	10	12345678
-----	-----	-----
country code	city code	destination number

Note: If you want to use this function, you should buy SkypeOut Credit first.

2.6 Make calls through PSTN (Phone to Phone)

Check the PSTN indicator is on, then press the wanted phone, and press "#" to call out. If the PSTN indicator is off, press "*" key to make it on.


Example: call to China beijing 00861012345678

Operation: Input the number 00861012345678, then press "#" to call out.

2.7 Answer a call

When a call in, the phone is ringing, pick up handset or press handfree key to answer the call.

2.8 Adjust options (volume and default channel)

Double-click the  on the taskbar, then you can adjust the volume and default channel.

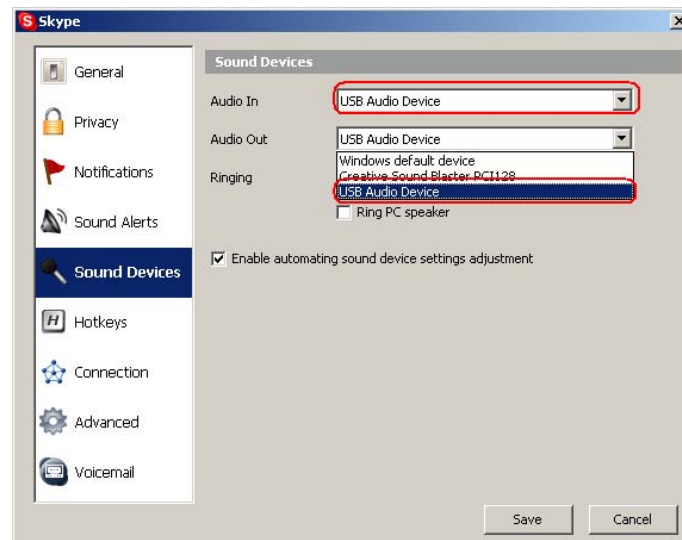
2.9 FAQ

Problem 1

The voice is played from the PC's sound card instead of the SE-B2K when I make/answer a call?

Resolution

Execute "Tools->Options->Sound Devices" to open the window as below:



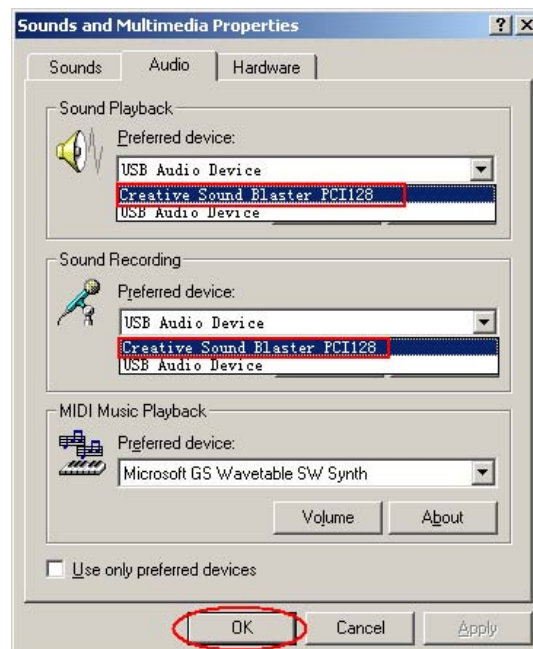
Set "Audio In" and "Audio Out" to "USB Audio Device".

Problem 2

The voice is played from the PC's sound card instead of the USB phone when I make/answer a call?

Resolution

Please execute the "Control Panel->Sound and Video (🔊)->Audio", set **Sound Playback** and **Sound Recording**'s Preferred device to your sound card, it shown as below:



Problem 3

Skype has been startup, but the icon of SkypeMate still shown as ?

Resolution

Maybe you have selected the wrong option, you can execute "Tools-> Options-> Privacy-> Manage other programs' access to Skype", then choose the needed option, click "Change" button to open the window as below, and make another selection.

